

le rex

SAS GOFOOD - Le REX de Toulouse

15 avenue Honoré Serres - 31000 Toulouse (FR)

+33 (0)5 61 38 57 71 - contact@lerextoulouse.com

TECH & HOSPITALITY RIDER

v. 2024.4

Managing Director | Programmer

Mathieu Doumerc

+33 (0)6 12 75 25 73

mathieu@lerextoulouse.com

Technical Director | Light Designer

Paul Aniorté

+33 (0)6 76 51 82 52

technique@lerextoulouse.com

ACCESS & LOADING

ACCES

Metro B

Bus n° 29, 31, 45

Stops Jeanne d'Arc, Compans Cafarelli

LOAD IN | LOAD OUT

In front of main entrance

15 avenue Honoré Serres

31000 Toulouse

PARKING

No parking

HOSPITALITY

BACKSTAGE

1 room

NO SMOKING ALLOWED

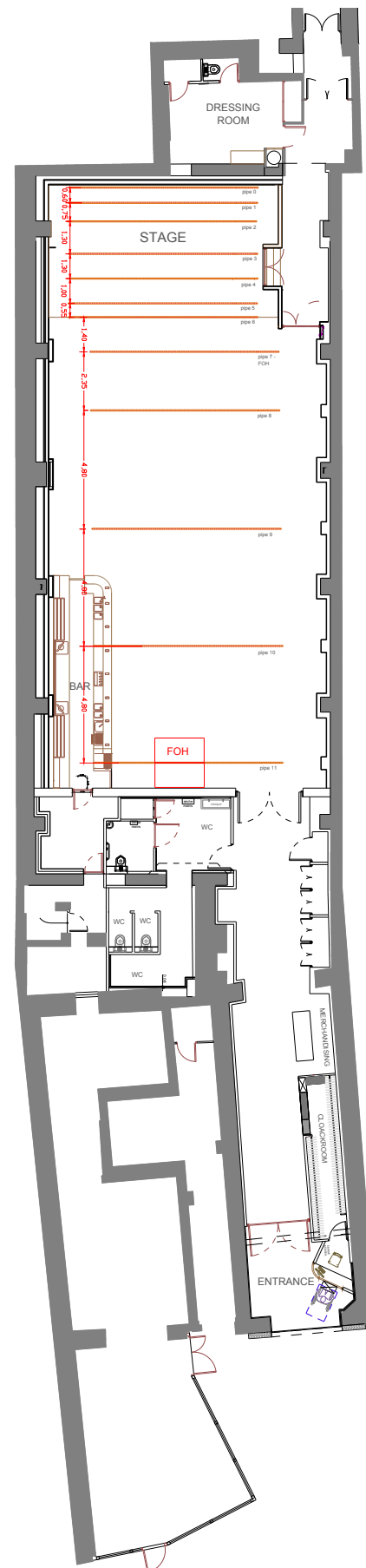
1 shower

1 WC

WiFi access everywhere

MERCHANDISING

1* 4m space in entrance hall



LE REX

CAPACITY

489 stand
231 sit

VENUE DIMENSIONS

18,5m*11m
175m² + bar

STAGE SPECIFICATIONS

Stage dimensions : 9m*5,40m
Show space : 7m*5,40m
Stage height : 0,60m
Crowd barriers all stage long

FOH AREA

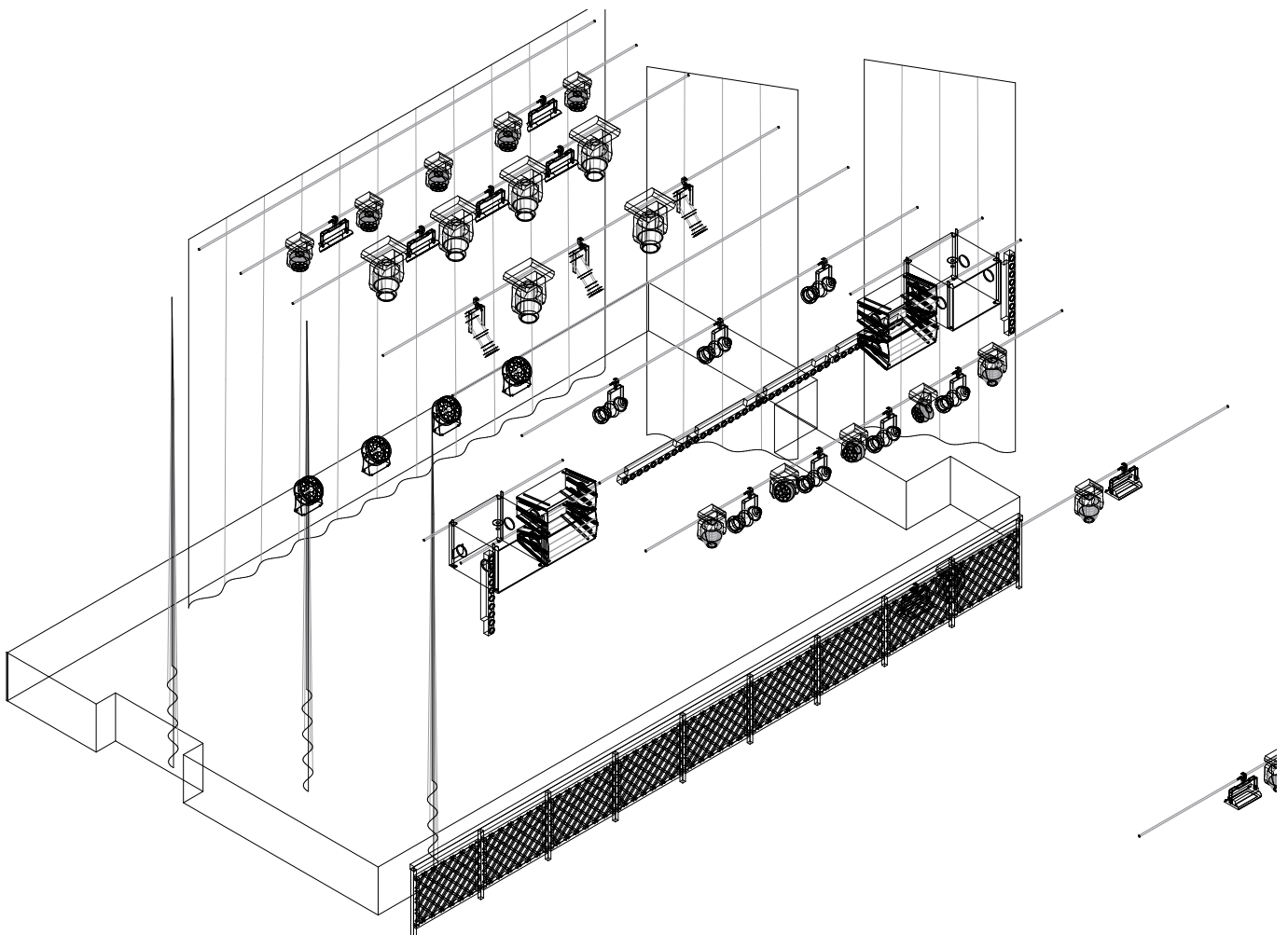
2m*2m*0,30m for light and sound
Lighting and sound control are operated from back and center of the venue

STAGE STRUCTURE

7 pipes Ø50mm 100 daN/m
Clearance 3,80m
Not motorised

VENUE STRUCTURE

5 pipes Ø50mm 80 daN/m
Clearance 4m
Not motorised



SOUND

PA SYSTEM : L'ACOUSTICS WIFO

2* LA ARCS FOCUS
2* LA ARCS WIDE
2* LA SB18 (air)
2* LA SB18 (ground)

MONITORS

7* HK Audio PRO :15
2* Yamaha DXR12
No monitor control desk
You'll need to mix from FOH

PATCH

1* MIDAS DL32
1* Behringer S16
1* Analog 16/8 (stage)

MIXING CONSOLE

1* MIDAS M32

POWER SUPPLY & BACKLINE

(shared w/ light)
5* 16A mono
1* 32A tri (P17 CEE) stage left /
house right
No backline available

STAGE EQUIPMENT

2* rolling risers 2m*1m*1m
4* rolling risers 2m*1m*0,30m
Back drop pipe Ø50mm L 4m

MICROPHONES & DI

06* Shure SM58
07* Shure SM57
01* Beyerdynamic M88
01* Shure Beta 91 A
01* Shure Beta 52
07* Sennheiser E604
03* Sennheiser E609

01* Sennheiser E614
04* Oktava MK012

07* Millenium Active DI
01* Klark Teknik DI 22P
01* BSS Audio AR-133

KEYBOARD & MIC STANDS

05* Straight tall stands
13* Tall stands

10* Small stands
02* Keyboard stands

LIGHT

POWER SUPPLY

(shared w/ sound)

5* 16A mono

1* 32A tri (P17 CEE) stage left /
house right

LIGHT CONTROL

grandMA2 onPC v.3.9.60.28

+ command wing

PATCH

DMX Univ 1 for stage (fixed)

DMX Univ 2 for venue (fixed)

DMX Univ 3 & MA2 2port node
free & available on stage

GENERIC LX FIXTURES

06* SUNSTRIPS

04* ENCORE FR150Z

01* CHANDELIER

LED FIXTURES

13* CAMEO Thunder Wash 600

04* CAMEO FLAT PRO 12

02* BEAMZ BAC300

INTELLIGENT LX FIXTURES

06* MARTIN RUSH MH 1 PROFILE+

08* MARTIN RUSH MH 5 PROFILE

08* MARTIN RUSH MH 6 WASH

10* NICOLS SPRINTER BEAM 150

LIGHT PLOT (see attached plots)

Please notice that this entire LX Fixtures list is permanent rig, **so house light plot is not modifiable.**

Additional fixtures can be brought within the limits of power supply available, and must be at your charge.

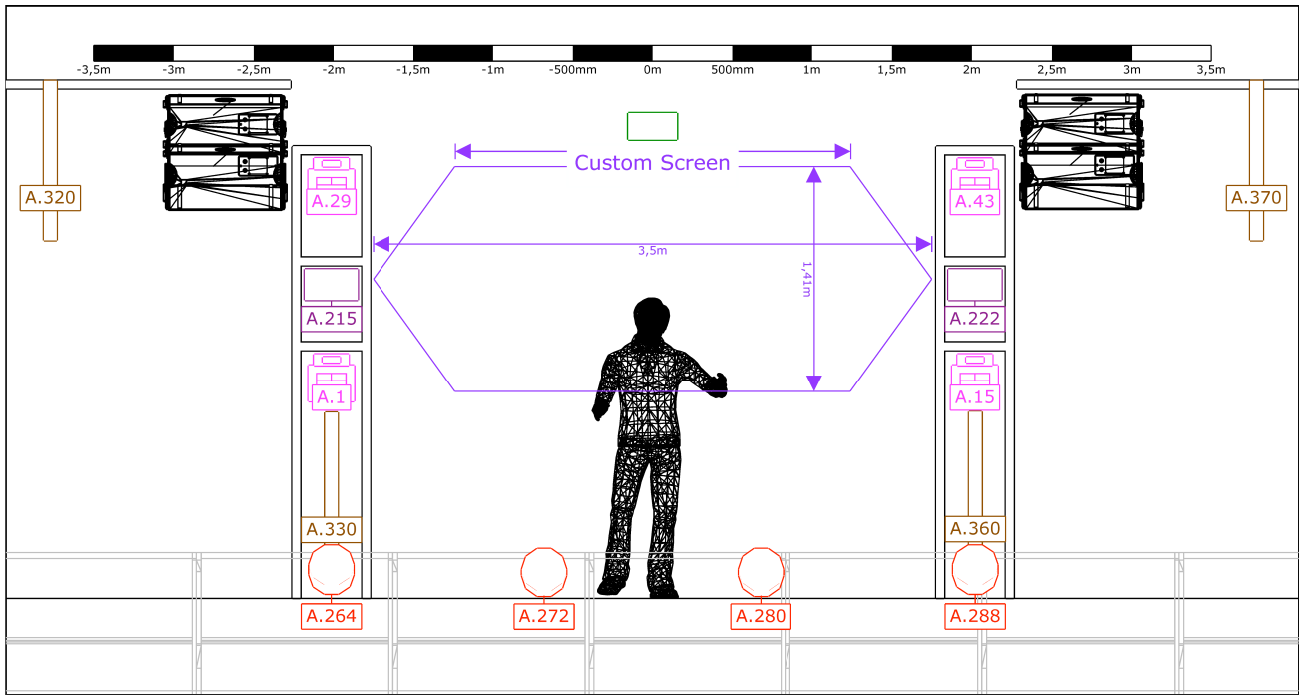
FX

1* Look Unique 2.1 Haze Machine

VIDEO

1* BenQ LU960 (HDMI at FOH)

1* Backdrop screen 4x3m or Custom screen 3,5x1,41m (see plot)



Stage Front - Symbol key

- | | | | | | |
|--|--|--|--|--|------------------------------|
| | Showtec Sunstrip Active DMX - 10ch - (4) | | Martin Rush MH 6 Wash - 14ch Mode 0 - (4) | | Kvant ClubMax 2000 FB4 - (1) |
| | Cameo Flat Pro 18 - 8ch - (4) | | Cameo Thunder Wash 600 RGBW - 7ch Mode 2 - (2) | | |

Stage Top - Symbol key

- | | |
|--|---|
| | Cameo Thunder Wash 600 RGBW - 7ch Mode 2 - (5) |
| | Nicols Sprinter Beam 150 - 15ch - (4) |
| | Martin Rush MH 5 Profile - 16ch - (4) |
| | Martin Rush MH 1 Profile Plus - 17ch Mode 0 - (6) |
| | Martin Rush MH 6 Wash - 14ch Mode 0 - (4) |
| | ADJ Encore FR150Z - 4ch - (2) |
| | BEAMZ BAC300 - 4-1ch - (2) |
| | BenQ LU960 |
| | Look Unique 2.1 - 2ch - (1) |

